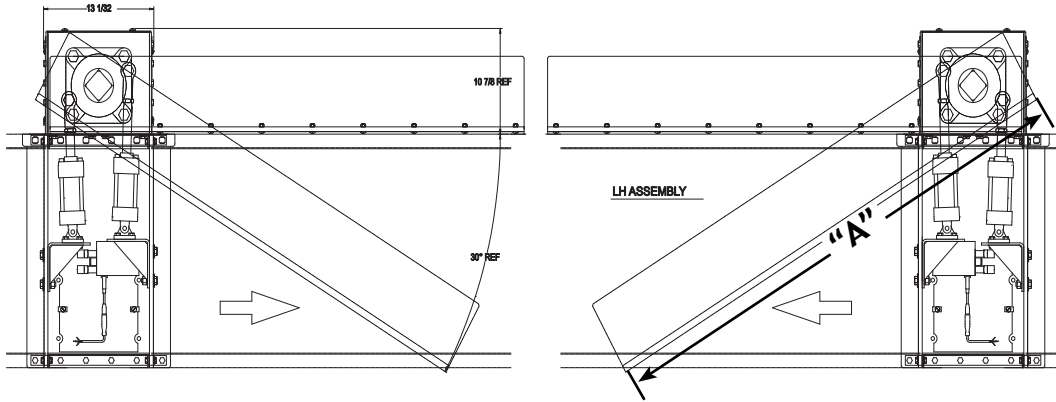


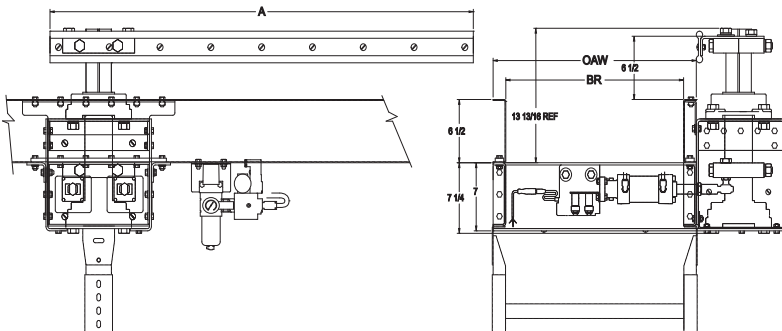
# SWING ARM PLOW ASSEMBLY

The Swing Arm Plow Assembly is a precisely timed plow arm diverter designed for use with the Model SB belt conveyor. The plow is specifically designed for diverting totes onto powered spurs. It also features a flat-faced plow option for carton diverting.

- Right hand or left hand diverts available
- Up to 40 cartons per minute
- For 30° or 45° diverting



	"A"	
OAW	30°	45°
18"	50"	38"
24"	56"	44"
30"	68"	50"
36"	80"	62"



## • STANDARD SPECIFICATIONS

**PAINT**—Powder painted

**CAPACITY**—1 lb. minimum carton weight, 50 lb. maximum carton weight, 36 in. maximum carton length, 1 in. minimum carton height.

**CYCLE RATE**—Up to 40 cycles per minute.

**RIGHT HAND OR LEFT HAND DIVERTS**—Please specify

**AIR VALVE**—24 volt DC single solenoid air valve.

**PLOW ARM**—Steel construction with dogbone wearstrip face.

**AIR FILTER, REGULATOR**—Supplied with safety soft start valve with manual and 24 volt solenoid lockout, ½ inch NPT inlet port.

**AIR CYLINDER**—Two 2 ½ in. bore x 2 in. or 3 in. stroke.

**AIR REQUIREMENTS**—80 P.S.I. working pressure, free air consumption at 80 psi-0.14 cubic feet per cycle. **Note:** Include safety factor when calculating compressor size. (1 ¼ in. minimum air supply line recommended).

30° or 45° Diverting - Please specify.

## • OPTIONAL EQUIPMENT

**AIR VALVE**—120 volt AC single solenoid valve.

**AIR FILTER, REGULATOR**—With 120 volt AC lockout.

**HOME PROX** - 24 volt DC or 120 volt AC.

