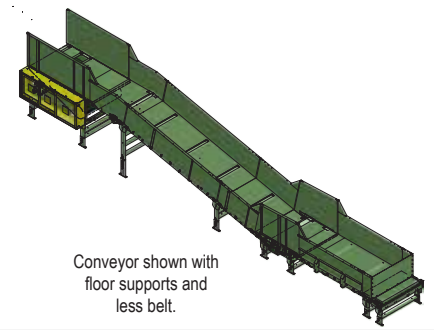


## Parcel Belt Conveyor

Designed for Parcel Bulk handling applications.

- End and Center Drive Options
- Heavy Duty Bolted Construction
- Spherical Roller Bearings
- Available in Bed Widths from 19" to 61.5"
- Speeds up to 550 fpm based on application
- Adjustable Floor Supports



COMPONENT WEIGHTS	UNIT WIDTH			
	37"	43"	49"	61.5"
DRI-12 SHAFT MOUNTED	2141	2488	2835	3558
DRI-112 TIMING BELT	2601	3023	3445	4323
DRI-43 SHAFT MOUNTED	1623	1887	2150	2698
DRI-34 SHAFT MOUNTED	1338	1555	1772	2224
DRI-134 TIMING BELT	1538	1755	1972	2424
DRI-196 TIMING BELT	1661	1930	2200	2761
INTERMEDIATE BED (12 GA)	246	279	312	380
INTERMEDIATE BED (10 GA)	317	360	403	491
INTERMEDIATE BED (7 GA)	388	441	494	602
TAI-10 (110)	335	379	423	514
TAI-02 (102)	423	470	516	624
HITCH ASSEMBLY	1050	1220	1390	1745
NOSE-OVER ASSEMBLY	264	307	350	439

### Notes:

Weights include 12" high side guard  
 Accessories, supports, crating, etc are not included in above weights  
 Does not include weight of gearmotor  
 Available carry and return rollers not included in above weights

## • STANDARD SPECIFICATIONS

**BELT**– Provided per customer specs

**BED**– 7, 10 or 12 ga. formed steel bed painted per customer specific color

**BEARINGS**– Sealed, pre-lubricated, self aligning, cast-iron spherical roller or ball bearings.

**MOTOR**– Available from 3 to 15 HP

**DRIVE OPTION**– Available Shaft Mounted or Timing Belt drives.

**BELT SPEED**– Available from 80 to 550 FPM

**DRIVE CAPACITY**– Up to 100 lbs. per linear foot (based on drive selection)

**GUARDING**– Customer specifications available per order

## • OPTIONAL EQUIPMENT

**UNDERSIDE BED COVERS**– Hinged expanded metal.

**SINGLE NOSEOVER**– Angles from 0 to 20 degrees (NOS-01).

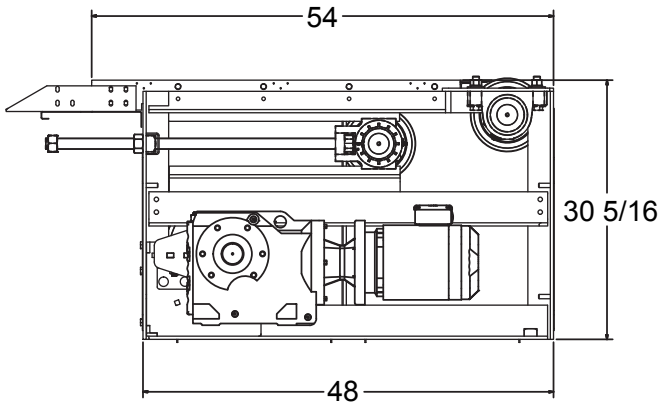
**HITCH**–For transition from horizontal to incline only.

**CABLE RAIL ASSEMBLY**– For mounting customer supplied cable.

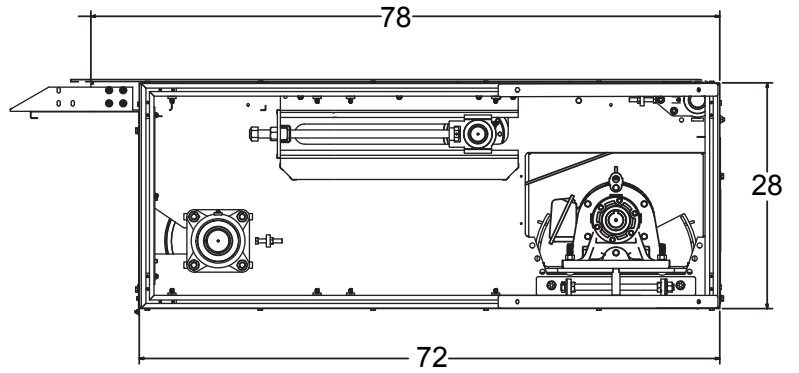
**SIDE GUARDS**–Available in 2" to 36" high (2" increments) (Overlapping or Non-overlapping)

**T-4 Slides**–Available per application

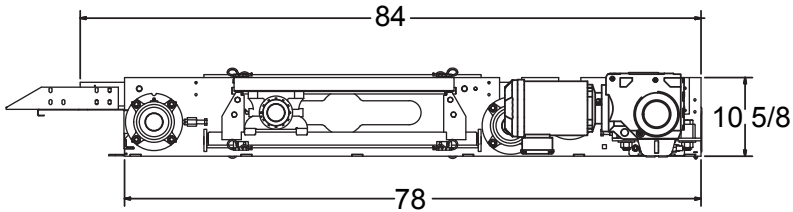
DRI-12 (16" Diameter Drive Pulley)



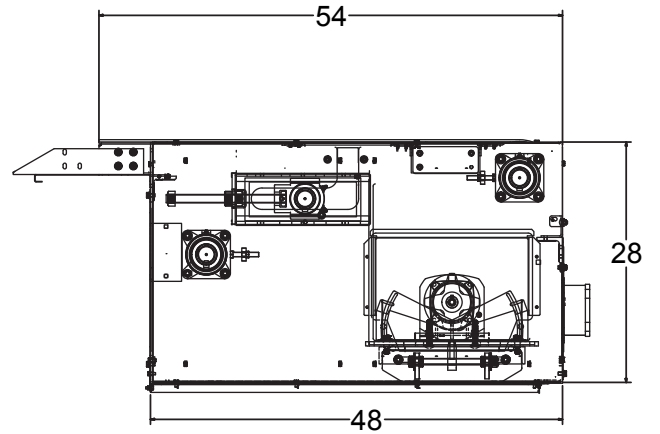
DRI-196 (12" Diameter Drive Pulley)



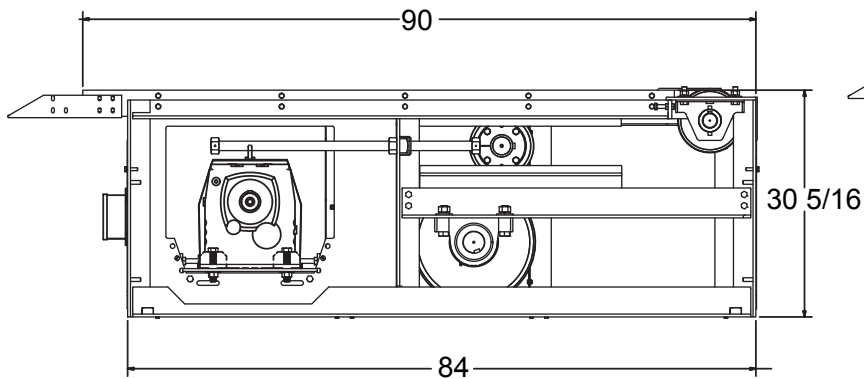
DRI-43 (8 5/8" Diameter Drive Pulley)



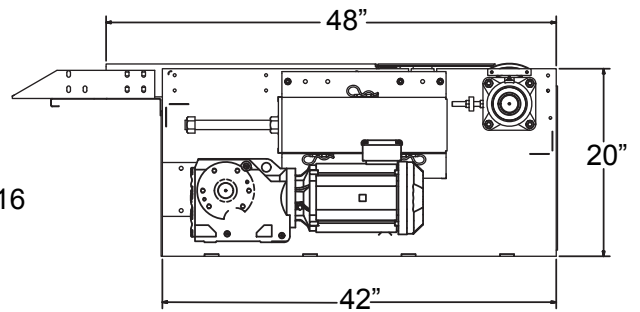
DRI-134 (8 5/8" Diameter Drive Pulley)



DRI-112 (16" Diameter Drive Pulley)



DRI-34 (8 5/8" Diameter Drive Pulley)



Other Drives Available:

- |          |          |          |          |
|----------|----------|----------|----------|
| DRI-02   | DRI-32   | DRI-134C | DRI-44   |
| DRI-102  | DRI-132  | LFC      | DRI-196C |
| DRI12C   | DRI-132C | DRI-36   |          |
| DRI-112C | DRI-34C  | DRI-37   |          |