



MAXXREACH

TELESCOPIC CONVEYOR

DETAILS

WIDTH: 18" / 24" / 30" / 36"

Width is determined by package size, available conveying area and application specific needs

LENGTH EXTENDED: 14 - 95'

Length is determined by specific application needs

MaxxReach® telescopic conveyors provide the highest level of productivity for large volume, shipping and receiving applications for any type of distribution center. Automate your loading and unloading areas and convey a variety of products from large or small cartons to loose bags and tires.

All of our telescopic conveyors feature a VFD controlled belt drive system providing smooth transitions from belt starts and stops at speeds up to 120 FPM. They also include a VFD controlled extension drive providing smooth operation when extending and retracting the conveyor. With a variety of lengths, widths, options and accessories, **MaxxReach®** conveyors will help achieve all of your material handling goals.



CONVEYORS

A DURAVANT COMPANY

MAXXREACH

TELESCOPIC CONVEYOR

SPECIFICATIONS

MODEL #	STANDARD LENGTH		OVERALL LENGTH
	CONTRACTED	EXTENDED	
MR2 14/34	14'	20'	34'
MR2 20/48	20'	28'	48'
MR3 18/54	18'	36'	54'
MR3 20/64	20'	40'	64'
MR3 23/74	23'	51'	74'
MR3 25/80	25'	55'	80'
MR3 28/88	28'	60'	88'
MR3 30/95	30'	65'	95'
MR4 16/58	16'	42'	58'
MR4 18/64	18'	46'	64'
MR4 22/74	22'	42'	74'
RL 20/16	20'	16'	20'
RL 25/20	25'	20'	25'
RL 30/24	30'	24'	30'
RL 40/32	40'	32'	40'

All conveyor products can be modified to suit specific design requirements. Please contact our sales representatives for details on sizes or options that are not listed.

STANDARD FEATURES

- Load capacity 50 lbs/ft
- Maximum live load at any given time: 4000 lbs.
- 2-Ply PVC Belt
- 3HP belt drive
- 60FPM – 120FPM belt speeds
- 45 FPM extension speed
- 1HP gear motor for extension with friction clutch
- One piece formed side pressings
- Operator controls – In/Out, Start/Stop, E-stop, Lights, ESB, Debris Tray
- Belt & E-stop status & interlocks
- Emergency stops at control panels
- UHMW stage gap filler
- Extension stop bar on final stage
- Audible alarm

OPTIONS

- Variable belt speeds available with VFD controls
- Photo eye flow control
- Indexing
- Localized electrical system design with any standard voltage
- Transition rollers at site end of the conveyor

ACCESSORIES

- Herringbone Transition
- Man-rider platform
- Raised belt transfer
- Traverse system
- Direct or pole mounted fan
- Articulating snout
- Telescopic ventilation tubes
- Swivel boom
- Hydraulic tilt
- Auto-loader
- Fused electrical disconnect

TECHNICAL DATA

CONSTRUCTION

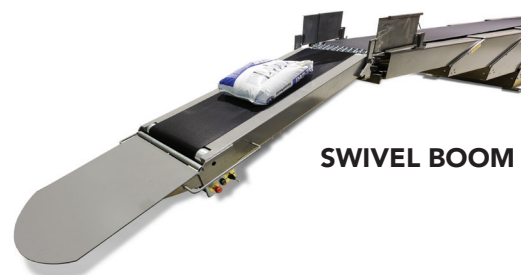
All Steel Construction

WARRANTY

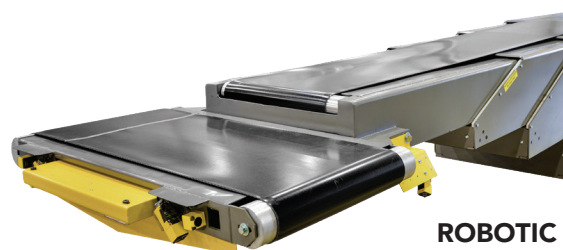
ELECTRICAL: 12 Months
MECHANICAL: 24 Months

SERVICES AVAILABLE

Technical Support
Installation & Service
Preventative & Routine Maintenance
Application Support
Operator & Maintenance Training



SWIVEL BOOM



ROBOTIC LOADER



MAN RIDER WITH TRAVERSE

800.327.9209 | FMHSALES@FMHCONVEYORS.COM | WWW.FMHCONVEYORS.COM



FMH CONVEYORS IS A MEMBER OF THE DURAVANT FAMILY OF COMPANIES

PACKAGING SOLUTIONS | FOOD PROCESSING SOLUTIONS | MATERIAL HANDLING SOLUTIONS | SUPPORTPRO

www.duravant.com