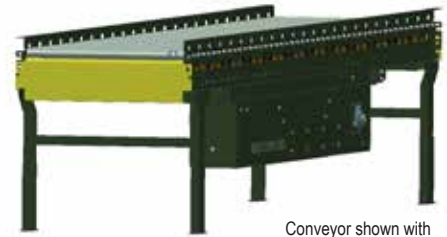


NBLR

Live Roller Conveyor

The Model NBLR is a horizontal narrow belt driven live roller conveyor, designed to transport light to medium cartons. Applications vary from manufacturing to distribution operations.

- Endless Splice Belt
- Adjustable MS-Type Floor Supports Available
- 1.9" Diameter Rollers with ABEC-1 Bearings



Conveyor shown with optional floor supports

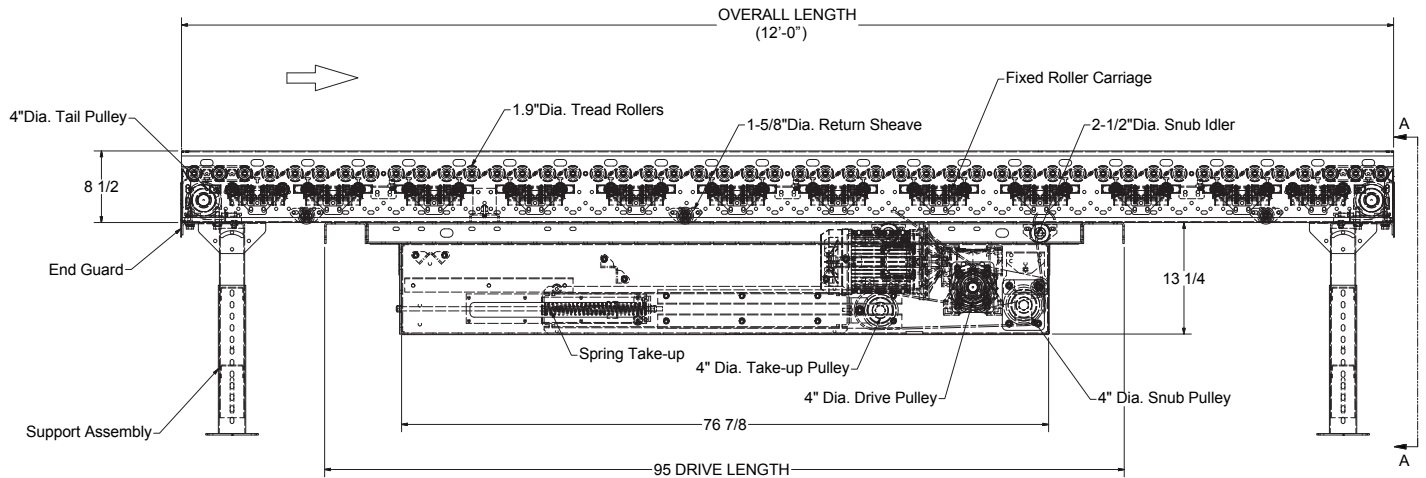
Between Rail Width	15"	21"	27"	33"	39"
Overall Frame Width	18"	24"	30"	36"	42"
Base Weight	574	634	694	754	814
Weight Per Foot	18	24	30	36	42

All weights in catalog are conveyor weights only. Accessories, crating, etc., are not included.

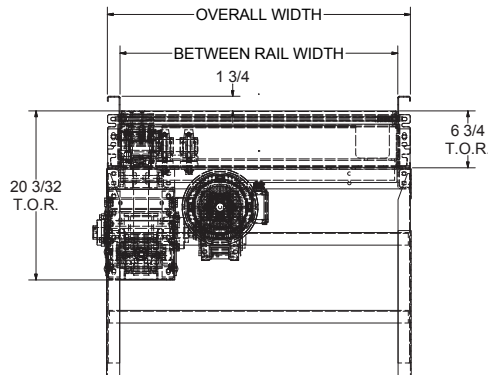
Note: Bed sections available in the following multiples:

Total Weight = 12' Base Weight + per foot weight x extra length

Base Weight - 12' Section w/Drive & Tails



SET LOW SHOWN WITH STANDARD DRIVE
(Located in the first bed section 9' or longer from infeed end)
(Minimum elevation 20" Top of Roller)



• STANDARD SPECIFICATIONS

NBLR

BED— Roller bed with 1.9 in. dia. Rollers x 16 ga. Galvanized tube spaced every 3 in. Mounted in 8-1/2 in. x 12 ga. Powder painted formed steel channel frame bolted with ABEC-1 bearings and with butt couplings.

BELT— 45MM wide polyurethane thermoplastic with aramid cords.

CENTER DRIVE— Can be placed on any section of conveyor 9'-0" or longer with Spring take-up in center drive provides 32 in. of belt take-up.

SET LOW CHANNEL— 8-1/2" deep "C" Channel.

CAPACITY— Maximum load per 35 lbs/ft.

PRESSURE FRAME CARRIAGE— Contains two Delrin rollers to provide positive drive to four tread rollers through the length of unit.

• OPTIONAL EQUIPMENT

FLOOR SUPPORTS—MS Type floor supports are available with a wide range of adjustment. Specify top of belt or roller elevation. One support required at every bed joint and ends of conveyor. Holes in feet for lagging to floor. Knee braces recommended above MS-6 support.

GUARD RAILS—Adjustable Universal Channel Guard Rail. See Accessory section. **Note:** If product comes into contact with Guard Rails, product flow will be affected. Fixed channel overlapping-one direction.

POLY-TIER SUPPORTS—36 in. to 120 in. support heights in 6 in. increments. Knee braces required.

CEILING HANGERS— $\frac{5}{8}$ in. dia. x 8 ft. long unplated steel rods fully threaded. Other lengths and galvanized rods available.

ELECTRICAL MOTOR CONTROLS—Non-reversing magnetic starters and push-button stations. AC variable frequency drive.

BELT SPLICE KIT - Includes press, finger cutter and guide rail.

