

Horizontal Belt Conveyor (Troughed Bed)

The Model TR, with built-in guard rails, is ideal for overhead conveying applications. It easily conveys boxes, cartons, cases, bags, etc., as well as loose parts.

- 10 Belt Widths
- Reversible (with center drive)
- Troughed Bed
- Adjustable MS-Type Floor Supports Available



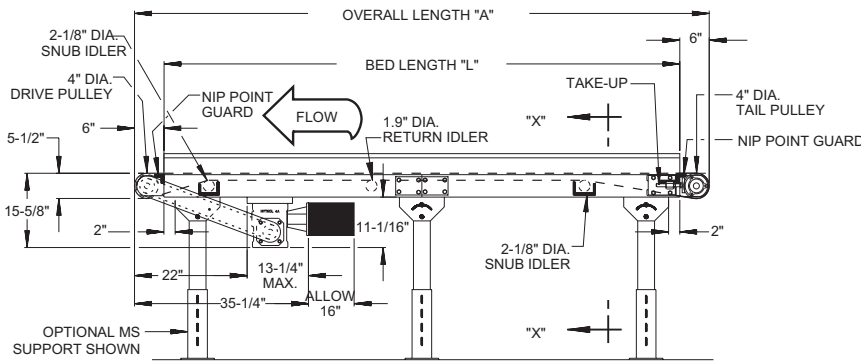
Conveyor shown with optional floor supports

| SIZE TO ORDER Overall Length "A" | Bed Length "L" | Overall Length with Center Drive | Drive Pulley | Black Friction Surface Belt Widths | | | | | | | | | |
|-------------------------------------|----------------|----------------------------------|--------------|------------------------------------|------|------|------|------|------|------|------|------|------|
| | | | | 6" | 8" | 10" | 12" | 14" | 16" | 18" | 20" | 24" | 30" |
| | | | | Between Side Guards | | | | | | | | | |
| | | | | 7" | 9" | 11" | 13" | 15" | 17" | 19" | 21" | 25" | 31" |
| Overall Bed Widths | | | | | | | | | | | | | |
| | | | | 8" | 10" | 12" | 14" | 16" | 18" | 20" | 22" | 26" | 32" |
| 6' | 5' | 6' | 4" Dia. | 254 | 267 | 277 | 287 | 297 | 320 | 330 | 358 | 381 | 404 |
| 11' | 10' | 11' | | 301 | 316 | 330 | 344 | 358 | 398 | 412 | 427 | 452 | 477 |
| 16' | 15' | 16' | | 369 | 388 | 407 | 425 | 443 | 501 | 520 | 539 | 573 | 607 |
| 21' | 20' | 21' | | 422 | 445 | 468 | 490 | 512 | 535 | 558 | 581 | 627 | 696 |
| 26' | 25' | 26' | | 491 | 519 | 546 | 573 | 599 | 627 | 655 | 683 | 739 | 823 |
| 31' | 30' | 31' | | 538 | 570 | 601 | 632 | 662 | 694 | 726 | 758 | 822 | 918 |
| 36' | 35' | 36' | | 535 | 621 | 656 | 694 | 737 | 773 | 810 | 846 | 919 | 1029 |
| 41' | 40' | 41' | | 655 | 695 | 735 | 759 | 813 | 853 | 894 | 935 | 1017 | 1140 |
| 46' | 45' | 46' | | 702 | 747 | 760 | 836 | 892 | 932 | 978 | 1023 | 1114 | 1249 |
| 51' | 50' | 51' | | 775 | 825 | 874 | 923 | 971 | 1022 | 1072 | 1122 | 1222 | 1372 |
| 56'-4" | 55' | 56' | 8" Dia. | 822 | 876 | 929 | 985 | 1046 | 1101 | 1156 | 1210 | 1319 | 1481 |
| 61'-4" | 60' | 61' | | 892 | 950 | 1008 | 1065 | 1122 | 1181 | 1240 | 1299 | 1417 | 1594 |
| 66'-4" | 65' | 66' | | 939 | 1001 | 1063 | 1127 | 1197 | 1260 | 1324 | 1387 | 1514 | 1703 |
| 71'-4" | 70' | 71' | | 1013 | 1081 | 1148 | 1215 | 1281 | 1351 | 1419 | 1487 | 1623 | 1827 |
| 76'-4" | 75' | 76' | | 1060 | 1132 | 1203 | 1277 | 1356 | 1430 | 1503 | 1575 | 1720 | 1936 |
| 81'-4" | 80' | 81' | | 1130 | 1206 | 1282 | 1357 | 1432 | 1521 | 1587 | 1664 | 1818 | 2049 |
| 86'-4" | 85' | 86' | | 1146 | 1257 | 1337 | 1419 | 1507 | 1589 | 1671 | 1752 | 1915 | 2158 |
| 91'-4" | 90' | 91' | | 1177 | 1331 | 1415 | 1499 | 1582 | 1669 | 1754 | 1839 | 2039 | 2324 |
| 96'-4" | 95' | 96' | | 1293 | 1382 | 1470 | 1561 | 1657 | 1748 | 1838 | 1927 | 2136 | 2433 |
| 101'-4" | 100' | 101' | | 1363 | 1456 | 1549 | 1641 | 1733 | 1828 | 1922 | 2016 | 2204 | 2486 |

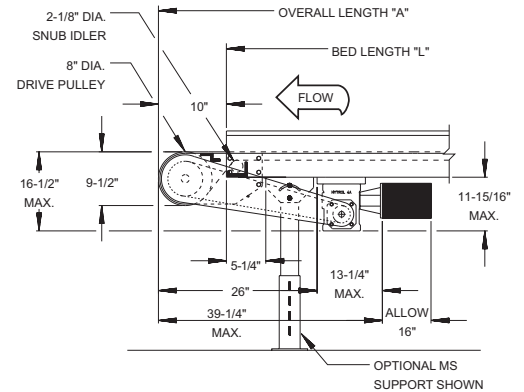
All weights in catalog are CONVEYOR WEIGHTS ONLY. Accessories, crating, etc., are not included.

NOTE: 16', 18" & 22" Bed Width (Up to 51' Length) - 1 Week Stockyard

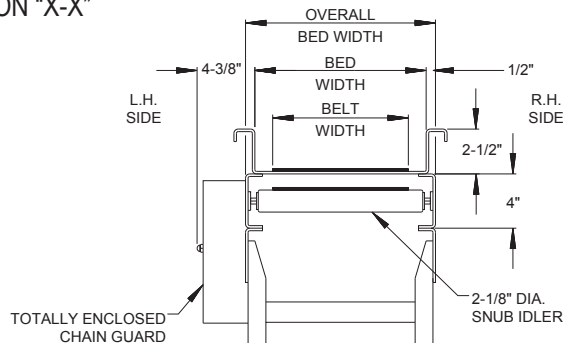
4" END DRIVE



8" END DRIVE



SECTION "X-X"



• STANDARD SPECIFICATIONS

BELT—Ultimate 140 BBS—Nitrile.

BED—4 in. deep x 12 ga. formed steel slider bed with 2 ½ in. deep guards, powder painted. Standard 5 ft. & 10 ft. long sections bolt together with splice plates.

END DRIVE—Located on discharge end of conveyor, chain guard on left hand side.

DRIVE PULLEY—4 in. dia. with 1 in. dia. shaft at bearings or 8 in. dia. with 1 ¾ in. dia. shaft at bearings, machine crowned and fully lagged. See chart.

TAIL PULLEY—4 in. dia. with 1 in. dia. shaft at bearings, machine crowned.

SNUB IDLER—Adjustable 2 ½ in. dia. pre-lubricated ball bearings. Guards included.

RETURN IDLER—Adjustable 1.9 in. dia. pre-lubricated ball bearings.

TAKE-UP—Take-ups at tail pulley. Provides 4 in. of belt take-up.

BEARINGS—Sealed, pre-lubricated ball bearings, self-aligning, ball bearings on drive and tail pulleys.

SPEED REDUCTION—Sealed worm gear C-Face speed reducer. No. 50 roller chain to drive pulley.

MOTOR—½ HP—208/230/460/575V—3 Ph.—60 Hz. Totally Enclosed C-Face.

BELT SPEED—Constant 65 FPM.

CAPACITY—Maximum load per linear foot of conveyor 75 lbs. NOT TO EXCEED capacity in charts.

FLOOR SUPPORTS—Now supplied as optional equipment.

| LOAD CAPACITY CHART @ 65 FPM W/STANDARD BELT | | | | | | | | |
|--|----------------|----------------------|-----|-----|-----|-----|----------------------|------|
| HP | BELT WIDTHS TO | LENGTHS UP TO | | | | | | |
| | | 4" Dia. Drive Pulley | | | | | 8" Dia. Drive Pulley | |
| | | 11' | 21' | 31' | 41' | 51' | 77' | 102' |
| DISTRIBUTED LOAD (LBS.) | | | | | | | | |
| ½ | 16" | 335 | 320 | 310 | 300 | 285 | 260 | 230 |
| | 24" | 320 | 300 | 285 | 270 | 255 | 210 | 170 |
| | 30" | 300 | 275 | 255 | 235 | 215 | 165 | 115 |
| 1 | 16" | 650 | 635 | 625 | 615 | 605 | 625 | 595 |
| | 24" | 635 | 620 | 600 | 585 | 570 | 580 | 540 |
| | 30" | 620 | 595 | 575 | 550 | 530 | 535 | 480 |

| LOAD CAPACITY CHART 25° INCLINED @ 65 FPM W/HIGH GRIP BELT | | | | | | |
|---|----------------|-------------------------|-----|-----|-----|-----|
| HP | BELT WIDTHS TO | LENGTHS UP TO | | | | |
| | | 11' | 21' | 31' | 41' | 51' |
| | | DISTRIBUTED LOAD (LBS.) | | | | |
| ½ | 16" | 155 | 145 | 135 | 125 | 110 |
| | 24" | 145 | 130 | 115 | 100 | 80 |
| | 30" | 135 | 115 | 95 | 75 | 55 |
| 1 | 16" | 310 | 300 | 290 | 280 | 270 |
| | 24" | 305 | 285 | 270 | 255 | 240 |
| | 30" | 290 | 270 | 250 | 230 | 210 |

• OPTIONAL EQUIPMENT

FLOOR SUPPORTS—MS Type floor supports are available with a wide range of adjustment. Specify top of belt or roller elevation. One support required at every bed joint and ends of conveyor. Holes in feet for lagging to floor. Knee braces recommended above MS-6 support.

BELT*—White Polymate 100 RMP-COS (cover one side), Black Trackmate 120 High Grip Longitudinal Groove with PVC cover, Brown Polymate Roughtop w/Nitrile cover, Black Trackmate 533 COS-PVC, Tan Glidetop, Brown Nitrile Roughtop.

BELT SPEED*—Other constant and variable speeds. V-belt drive supplied under 17 FPM.

HIGHER SIDES—4 in., 6 in., 9 in., and 12 in. high vertical sides (12 in. Maximum).

OVERHEAD END DRIVE—Motor reducer unit mounted 9 ½ in. above belt. Other clearances available, specify. Chain guard RH side. Minimum elevation 6 in. with 4 in. drive, 10 in. with 8 in. drive.

SIDE MOUNTED END DRIVE—Motor reducer unit mounted to LH side of conveyor. Minimum elevation 7 in. with 4 in. drive, 10 in. with 8 in. drive.

CENTER DRIVE—Provides 16 in. of belt take-up. Minimum elevation 16 in. with 4 in. drive, 17 in. with 8 in. drive. Specify location. Minimum OAL without modification—63 in. with 4 in. drive, 66 in. with 8 in. drive.

LOW ELEVATION SIDE MOUNTED CENTER DRIVE—Motor-reducer unit mounted to side of conveyor. Minimum elevation 13 ½ in. with 4 in. or 8 in. drive.

STACKED END DRIVE—Minimum elevation 27 ¾" with V-belt drive, 33 ¾" with C-Face drive.

SHAFT MOUNTED END DRIVE—Contact Factory

V-BELT DRIVE—V-Belt supplied between motor and reducer. Minimum overall drive width 14 in. Allow 65 in.

O-RING DRIVE CHAIN—With sealed in lubricant (Recommended for applications that do not permit regular lubrication).

UNDERSIDE TAKE-UP—Provides 16 in. of belt take-up. Extends down 13 ¼ in. from top of belt.

NOSEOVER*—Adjustable, single (0° to 15°), double (0° to 30°).

LOWER POWERED FEEDER*—Chain type driven from tail pulley of inclined conveyor. Underside take-up required when end drive is used. MS-Type floor supports now supplied as optional equipment. 8 in. dia. drive recommended on conveyor when feeder exceeds 44 ½ in. OAL.

GRAVITY BRACKETS—Adjustable bars with 1 in. dia. pop-out transfer roller to attach wheel or 1 ¾ in. roller conveyor. Available 11 in. to 25 in. bed widths only.

BUTT COUPLINGS—Provides connection to SB, RB, LR, ACC, ACZ, ABEZ, 190-NSP, 190-NSPEZ, 1.9 in. & 2.0 in. gravity conveyors. Includes 1 in. dia. pop-out roller. Center drive or underside take-up recommended.

PULLEYS—6 in. tail with 1 ¾ in. dia. shaft at bearings or 8 in. drive with 1 ¾ in. dia. shaft at bearings.

CASTERS—See Accessory section.

POLY-TIER SUPPORTS—36 in. to 120 in. support heights in 6 in. increments. Knee braces supplied.

CEILING HANGERS—¾ in. dia. x 8 ft. long unplated rods fully threaded. Other lengths and galvanized rods available.

MOTORS—Energy efficient, single phase, brakemotor, other characteristics. 2 HP maximum.

ELECTRICAL CONTROLS—One direction manual start switch, reverse drum switch, non-reversing and reversible magnetic starters, push button stations. AC variable frequency drive.

***NOTE:** Capacity affected with these options.