



Stewart Glapat Corporation

Load-X ADJUSTOVEYOR



Next Generation of Truck Loading Model 3282D24FB-IL



- Outbound double-boom Adjustoveyor to be used in conjunction with a high speed sorter
- Packages maintain a consistent flow and conveyor does not touch the floor of the truck
- Movement is not dependent on gravity and truck can be loaded at any angle
- Safer and more ergonomic for employees
- Indexing feature increases productivity and significantly reduces product loss and damage; additionally, indexing allows a single employee to work multiple doors
- Low overall cost of ownership, minimal maintenance required, and decades-long productive life

Stewart Glapat Corporation
Load-X
ADJUSTOVEYOR

Pull out gravity conveyors with skate wheels must be manually pulled out into the truck by employees. This process is time consuming and unsafe. The Load-X Adjustoveyor uses push button controls to extend and retract the conveyor while the belt is continuously in motion.



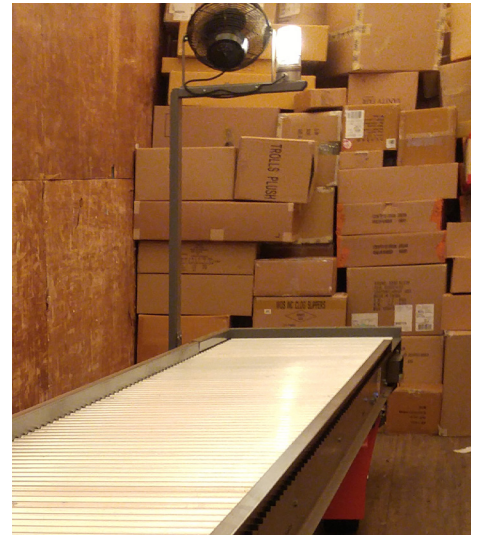
Vs. The Competition



Wheels are used to roll the gravity conveyor onto the floor of the truck. Ease of movement is affected by the condition of the truck floor. The Load-X Adjustoveyor does not touch the floor of the truck, resulting in a smooth loading process irrespective of truck floor conditions.



A long accumulation of boxes can buckle and cause product to fall on the floor, causing damage. When this occurs, employees must move boxes manually, resulting in a loss of productivity.



Gravity flow conveyors are dependent on truck floor elevation in order to move product. The Load-X Adjustoveyor uses a belt to move product in a fluid, controlled manner, regardless of floor elevation level. Worn bearings can cause the rollers to stop product flow.



"Where new ideas originate"

STEWART GLAPAT Corp.

P.O. Box 3030 • 1639 Moxahala Avenue • Zanesville, OH 43701-3030 • 740-452-3601

www.Adjustoveyor.com



*Designed and
manufactured
by American
workers in the
U.S.A.*